



Dixie® Full-Fold 1-Ply
Napkin Dispenser Refill
37835



Dixie® Full-Fold
Napkin Dispenser
51602

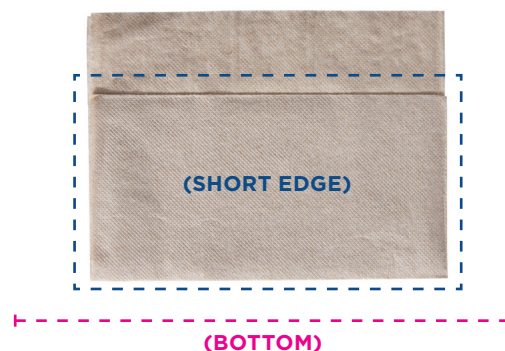
DIXIE® UNIVERSAL NAPKIN DISPENSERS

Napkin Loading Instructions

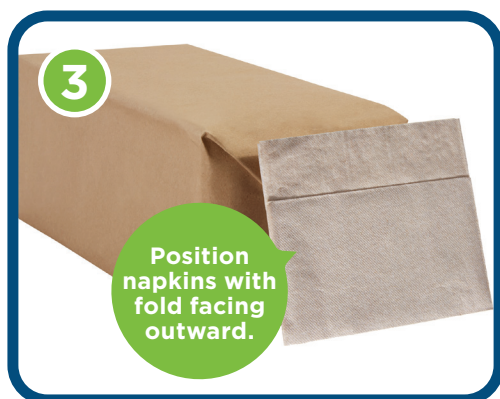
1. Open the Dispenser. Gently pull the silver-plated panel downward as shown.



2. Prepare Your Napkins. Take a stack of napkins from their packaging, enough to fill the dispenser. (Make sure they're upright, with short edge at the bottom.)



3. Load the Napkins: Position napkins with the fold facing outward. Then slide them carefully into the dispenser.



4. Close and Check. Close the dispenser securely. Check through the dispensing window to ensure the napkin's front-panel edge is visible and ready for use.



5. Test Dispensing: Dispense a few napkins to make sure they flow smoothly and don't tear. Adjust as necessary.



For more information or support, contact
GPXpress® Platform Support Team: 1-866-435-5694

© 2024 GP PRO. All rights reserved. All trademarks are owned by or licensed to Georgia-Pacific Consumer Products.

24_1430404_01 R2



Georgia-Pacific